



CURVE
LANDSCAPE

PROFILE

— 2023 —

Content

- DME Story
- Curve Background
- Formal Information
- Curve Scope
- Line of Services
- Organization Chart
- ISO Certificates
- Safety and Quality Policies
- List of Equipment
- Residential Projects
- Coastal Projects
- Scale Projects
- ASHGAR Nursery
- Partners of Success



DME Story

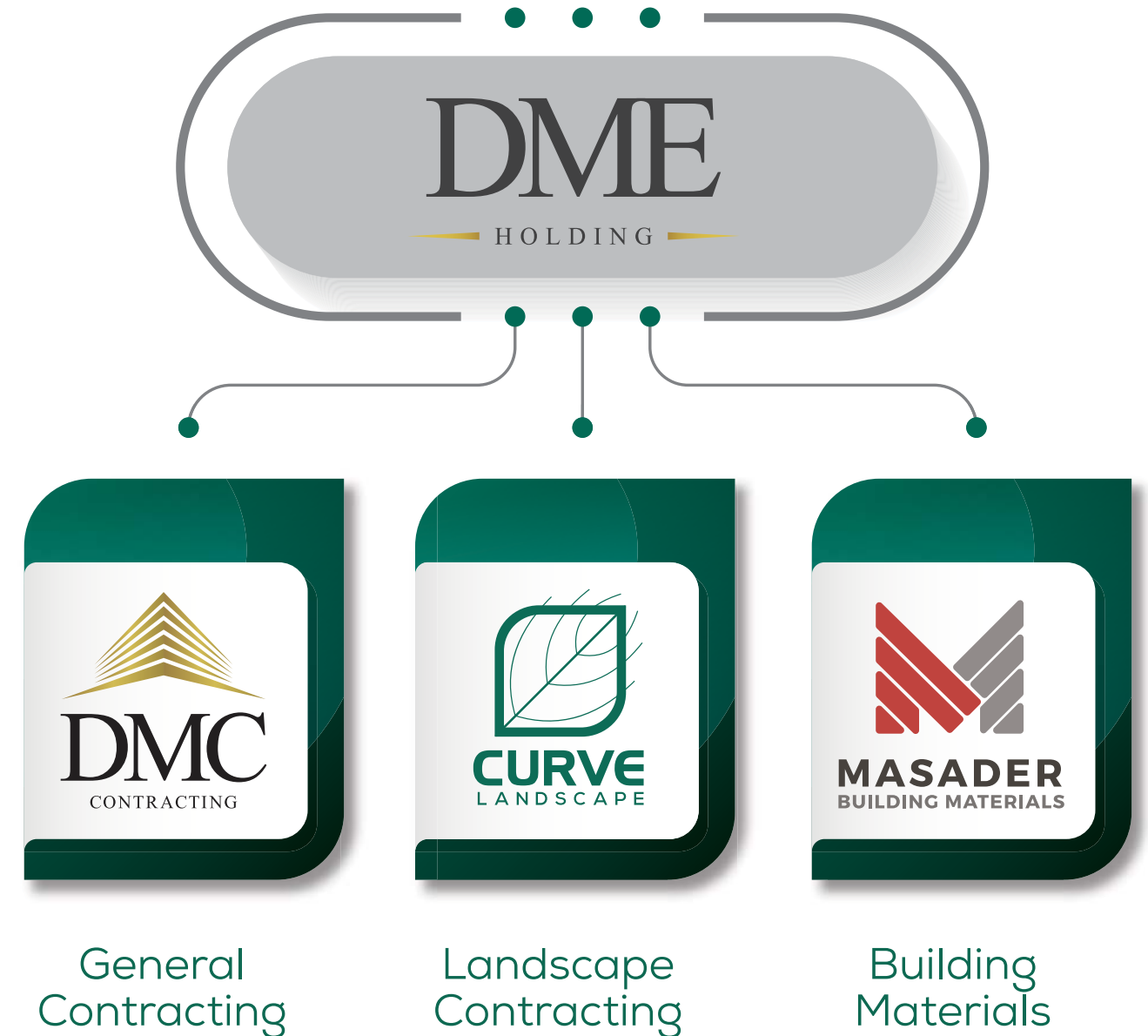


DME is considered one of the Egyptian leading investment companies in the engineering industry. Currently DME is a major shareholder and investor in three of the leading companies across the engineering field:

- » **DMC** (General Contracting & Projects Construction)
- » **CURVE** (Landscape Contracting)
- » **MASADER** (Building Material & Interlock Production)

DME is also considered one of the unique groups with vertically integrated approach within the construction and engineering field providing our companies' clients with a superior quality with cost efficiency and value engineering approach based on extensive real estate industry knowledge.

People & team work are the key drivers for growth adding to DME's strong financial capabilities which is considered one of the key drivers of success with investments that exceeds Four Billion EGP in the industry through our companies.



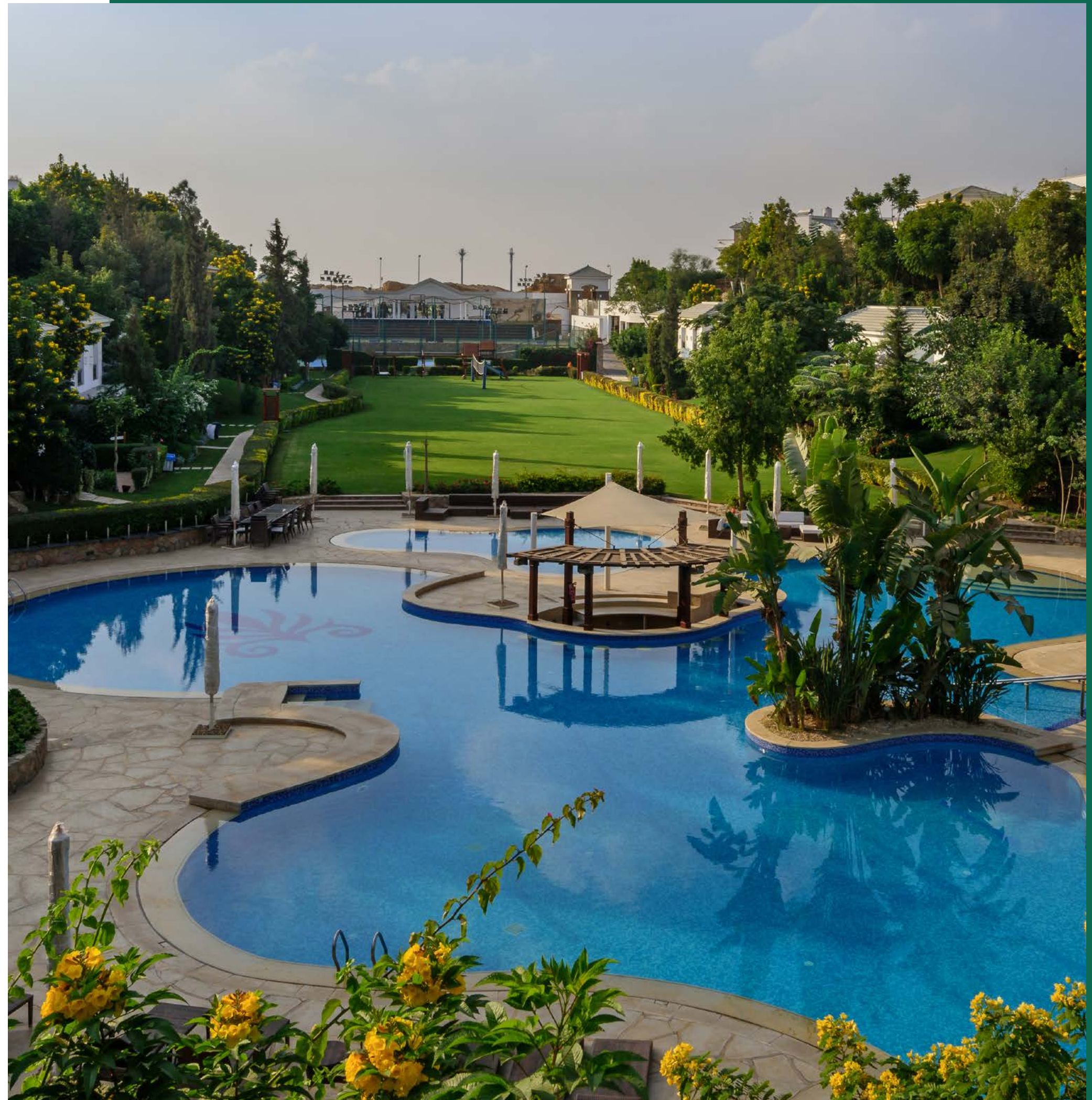
Background

CURVE Landscape was established in 2007. It has grown to be one of the premier landscape contracting companies in Egypt.

We have expanded with strong leadership and a core team of more than 450 professionals supported by a seasonal team exceeding 750 personnel. Being a value based organization: we strongly believe that we can't grow and prosper without adhering to our core values and following our missions to fulfill our dreams.

We invest in our people, as we consider our team the corner stone of our foundation and success. With the unique experiences of each member, we have reached where we stand today and with their continuous dedication, we strive to become the leading landscape contracting company in the market.

CURVE Landscape was registered with the Egyptian Federation for Construction and Building Contractors (EFCBC).





General Information

Registration Name	Curve Landscape
Established Year	2007
Company Form	S.A.E – 100% owned by Private investors

No. of Employees	Overall Curve's manpower are 1200 employees
-------------------------	---------------------------------------------

CURVE EXECUTIVES

Chief Executive Officer	Mr. Sherif Soliman
Chief Operation Officer	Eng. Khaled Zaki
Chief Financial Officer	Mr. Mohamed Noufal
Strategic Planning & Business Development Director	Mr. Marwan Farid

CONTACT INFORMATION

Address	8 Al-Fateh St., off Al-Hegaz St., Heliopolis
City – Government	Cairo – Egypt
Tel.	+202 263 836 06 & +202 263 836 07
Website	www.curvelandscape.com

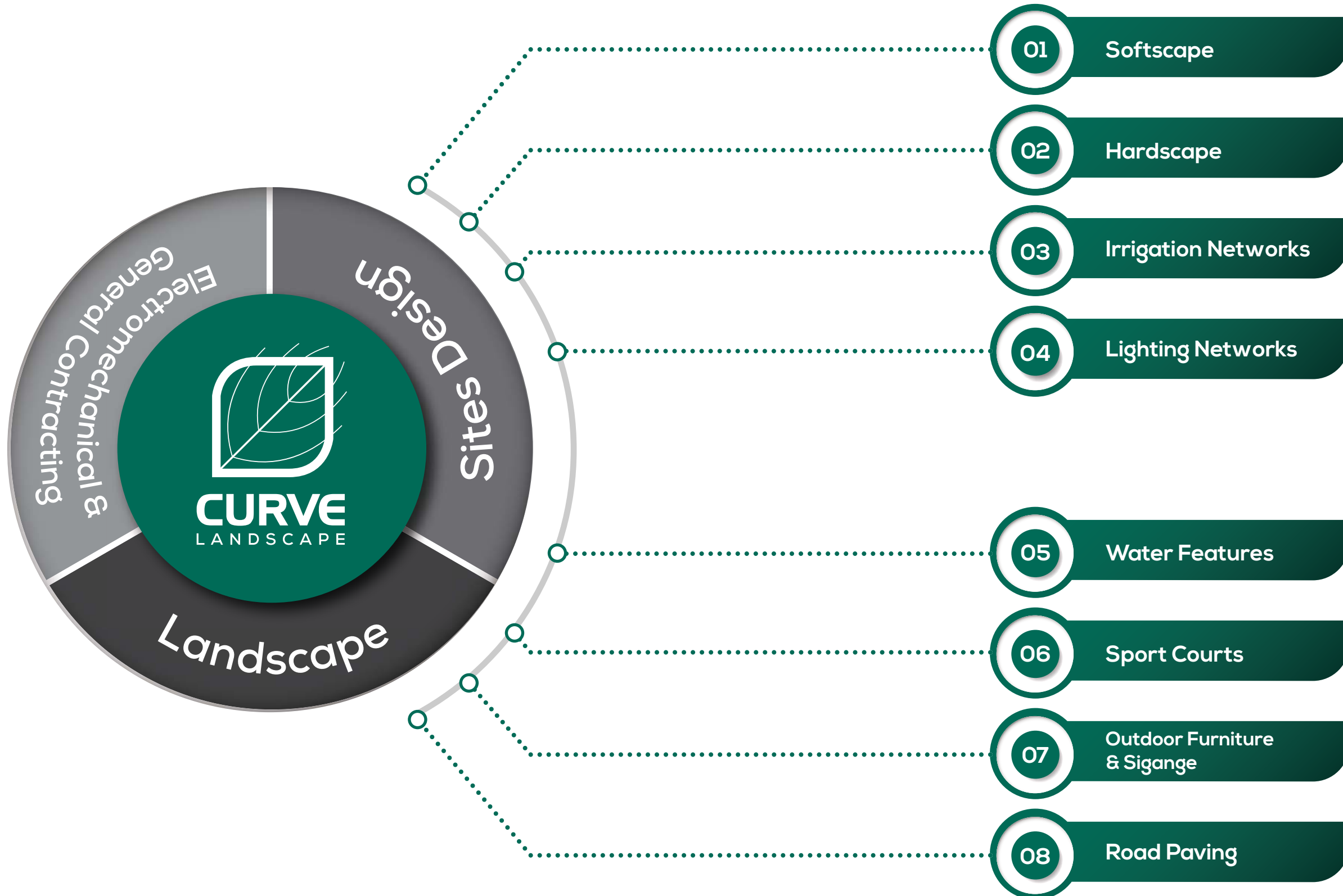
CONTACT PERSONS

Contact Person	Marwan Farid – Strategic Planning & Business Development Director
Mobile No.	+2 0100 503 06 00
Email Address	marwan.farid@dmc-curve.com

Contact Person	Mohamed Wagdy – Tendering Deputy Director
Mobile No.	+2 0115 445 14 75
Email Address	mohamed.wagdy@dmc-curve.com



Curve Scope





Line of Services



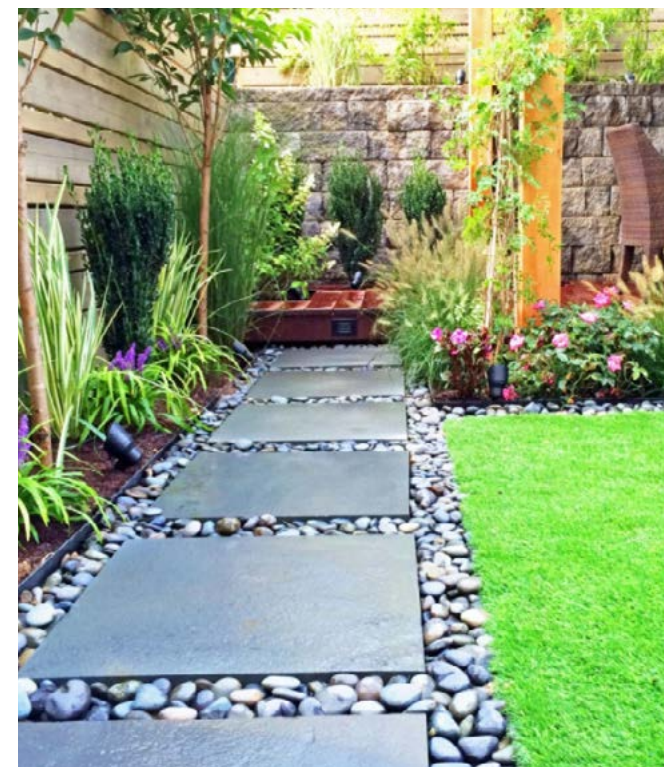
Softscape

Softscape is concerned with supplying and planting all types of plants, such as lawn areas, ground covers, shrubs, trees, palms and palm likes. We have a vast experience in the Softscape field, where our nursery gives us the opportunity to provide our clients with international standard plants that suit their needs and are suitable for every construction site.



Hardscape

CURVE constructs Hardscape including all types of paved areas; including streets, sidewalks, plazas, villa entrances and patios from various materials including marble and granite, concrete pavers, asphalt, stabilized soil, etc.





Irrigation Networks

CURVE supplies and installs the irrigation networks for all softscape elements, supplied by the world's leading irrigation networks suppliers. We also include, fittings, valves and emitters whether they are sprinklers, bubblers or drippers for all irrigation systems and systems range.



Lighting Networks

Using Landscape Lighting for multiple purposes is an edge at CURVE. According to the projects designers lighting networks are not only used as light sources but also for security as well as emphasizing certain aspects of the design to create a beautiful & enjoyable portrait for the project's residents, CURVE supplies and installs all the lighting components starting with the wiring and control panels to the lighting units - whether they are lighting poles of pollards or up lights and earth spikes, etc. as well as lighting for the buildings exteriors and water features.





Water Features

CURVE has a vast experience in water features construction, with all its entails while being customized to each and every project. Water features include traditional swimming pools with various systems, such as over flow, skimmer or horizon pools. CURVE also provides artificial lakes, lagoons and up to 12 meter high waterfalls. On a smaller scale, simple shallow water channels and regular fountains or imported marble fountains are a part of our services offered.



Sports Facilities

Sports Facilities are more than just the surface visible to the end user. The construction requires having a suitable and leveled sub-base and base, the necessary drainage installation, in addition to choosing from a wide range of final surfacing options available. CURVE has an extensive experience in the field of sports courts construction.





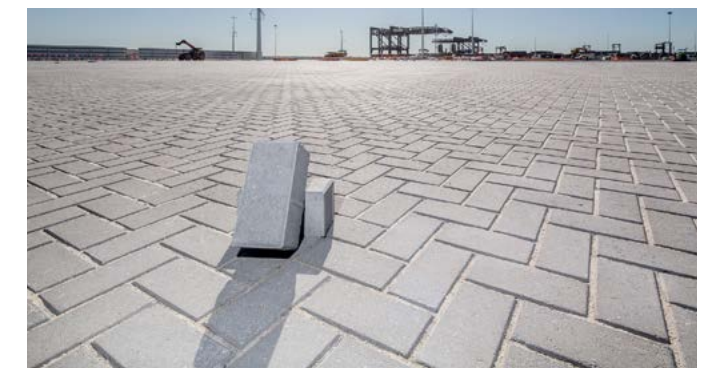
Outdoor Furniture & Signage

CURVE fabricates, imports, supplies and installs outdoor furniture and signages made from various materials including wood, metals and polymers. CURVE range of products include garden benches, trash canisters, wooden pergolas, gazebos and decks that CURVE are build on site according to a design that is made specially to match the clients' requirements.



Road Paving

Curve has developed mutual cooperation agreements with some of the biggest road paving contractors in Egypt to execute road paving works within the assigned landscape projects.

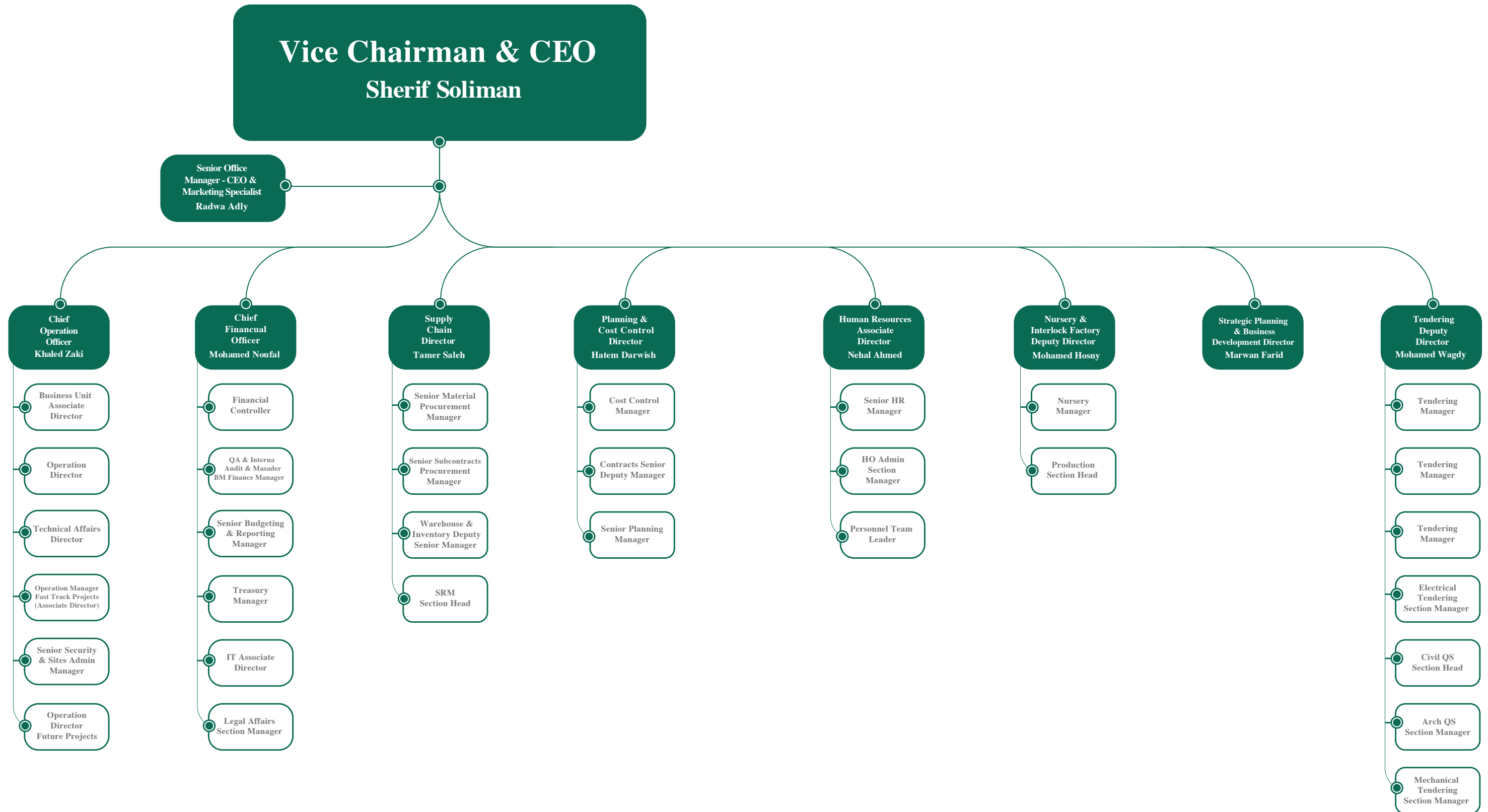




Organization Chart



Organization Chart





ISO Certificates



ISO 9001 : 2015

ISO 45001 : 2018



CERTIFICATE

Management system as per
ISO 9001 : 2015

The Certification Body TÜV NORD CERT GmbH hereby confirms as a result of the audit, assessment and certification decision according to ISO/IEC 17021-1:2015, that the organization

Curve Company For Landscape Design & Construction
8 El-Fateh St, Off Al Hegaz St, Heliopolis
Cairo
Egypt



operates a management system in accordance with the requirements of ISO 9001 : 2015 and will be assessed for conformity within the 3 year term of validity of the certificate.

Scope

Provide full landscape services for Softscape, Hardscape, Irrigation Network, Lighting Fixtures, Water Features, Sports Facilities, Signage and Outdoors Furniture.

Certificate Registration No. 44 100 23658707 Audit Report No .ER-0185/2022	Valid from 2023-02-08 Valid until 2026-02-07
-------------------------------------------------------------------------------	-------------------------------------------------


 Certification Body
at TÜV NORD CERT GmbH

Essen, 2023-02-08

TÜV NORD CERT GmbH
Am TÜV 1
45307 Essen
www.tuev-nord-cert.com






CERTIFICATE

Management system as per
ISO 45001 : 2018

The Certification Body TÜV NORD CERT GmbH hereby confirms as a result of the audit, assessment and certification decision according to ISO/IEC 17021-1:2015, that the organization

Curve Company For Landscape Design & Construction
8 El-Fateh St, Off Al Hegaz St, Heliopolis
Cairo
Egypt



operates a management system in accordance with the requirements of ISO 45001 : 2018 and will be assessed for conformity within the 3 year term of validity of the certificate.

Scope

Provide full landscape services for Softscape, Hardscape, Irrigation Network, Lighting Fixtures, Water Features, Sports Facilities, Signage and Outdoors Furniture.

Certificate Registration No. 44 126 23658707 Audit Report No .ER-0185/2022	Valid from 2023-02-08 Valid until 2026-02-07
-------------------------------------------------------------------------------	-------------------------------------------------


 Certification Body
at TÜV NORD CERT GmbH

Essen, 2023-02-08

TÜV NORD CERT GmbH
Am TÜV 1
45307 Essen
www.tuev-nord-cert.com





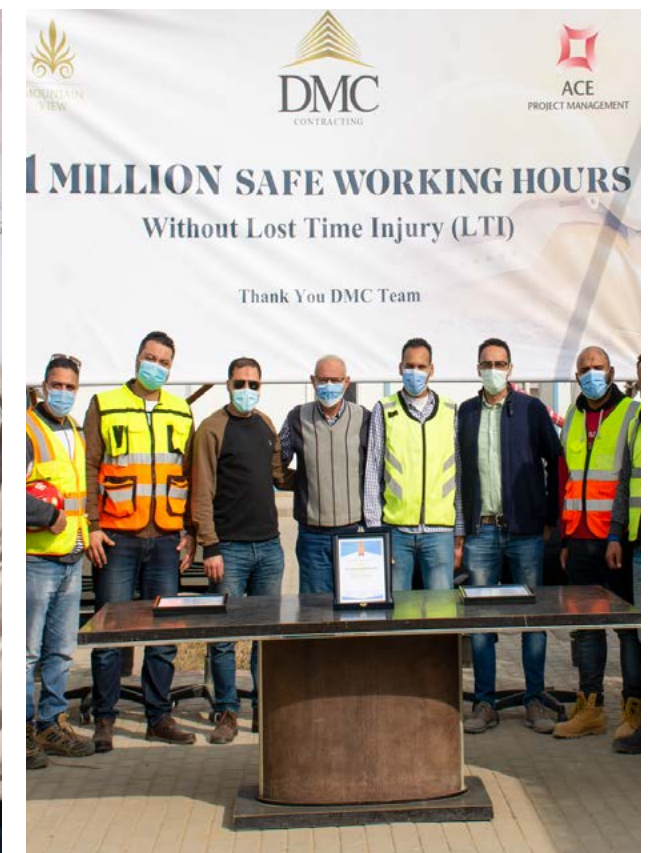

Safety & Quality



Certificates of HSE Appreciation



Granted From ECB





Granted From EMAAR





Granted From ACE





List of Equipment



List of Equipment

AGRICULTURE TRACTORS IMR, BELARUS 92 HP



SERVICE EQUIPMENT / ROLLER AND PLATE COMPACTORS



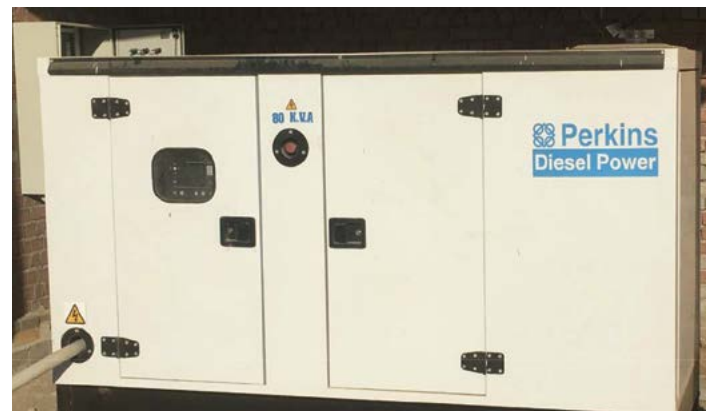
(FLAT TRAILERS 4 M/8TON) AND (WATER TANKS 5M³)



SERVICE EQUIPMENT / BENDING AND CUTTING MACHINES, AIR COMPRESSOR



DIESEL GENERATOR PERKINS, CUMMINS (FROM 30 - TO 60 KVA)



WATER TRUCK TANKS MERCEDES BENZ & IVECO 20 M³





List of Equipment

WHEEL EXCAVATOR DOOSAN DX210 (21 TON)



WHEEL LOADER CAT 966H



DIESEL GENERATOR CAT, PERKINS, HIOMANSA, CUMMINS (FROM 20 - TO 165 KVA)



WHEEL LOADERS CAT 950H



WHEEL LOADERS VOLVO L150 (26.5 TON)



(FLAT TRAILERS 4 M/8TON) AND (WATER TANKS 5M³)



MINI LOADERS CAT 908H, 908K, VOLVO L30B (6.5 TON) WITH FORKS



BACKHOE LOADER CAT 422F



SERVICE EQUIPMENT PLATE COMPACTORS, CONCRETE VIBRATORS, WATER PUMPS





Landscape Contracting (Residential Projects)

SODIC VILLETTE

Location 5th Settlement, New Cairo – Egypt
Client SODIC
Consultant Shaker Consultancy Group
General Contractor CURVE
Duration 2022 - 2023
Project Value 22 Million EGP
Scope Softscape – Hardscape – Irrigation Networks – Outdoor Furniture – Signage – Lighting Networks – Water Features – Swimming Pools – Road Paving

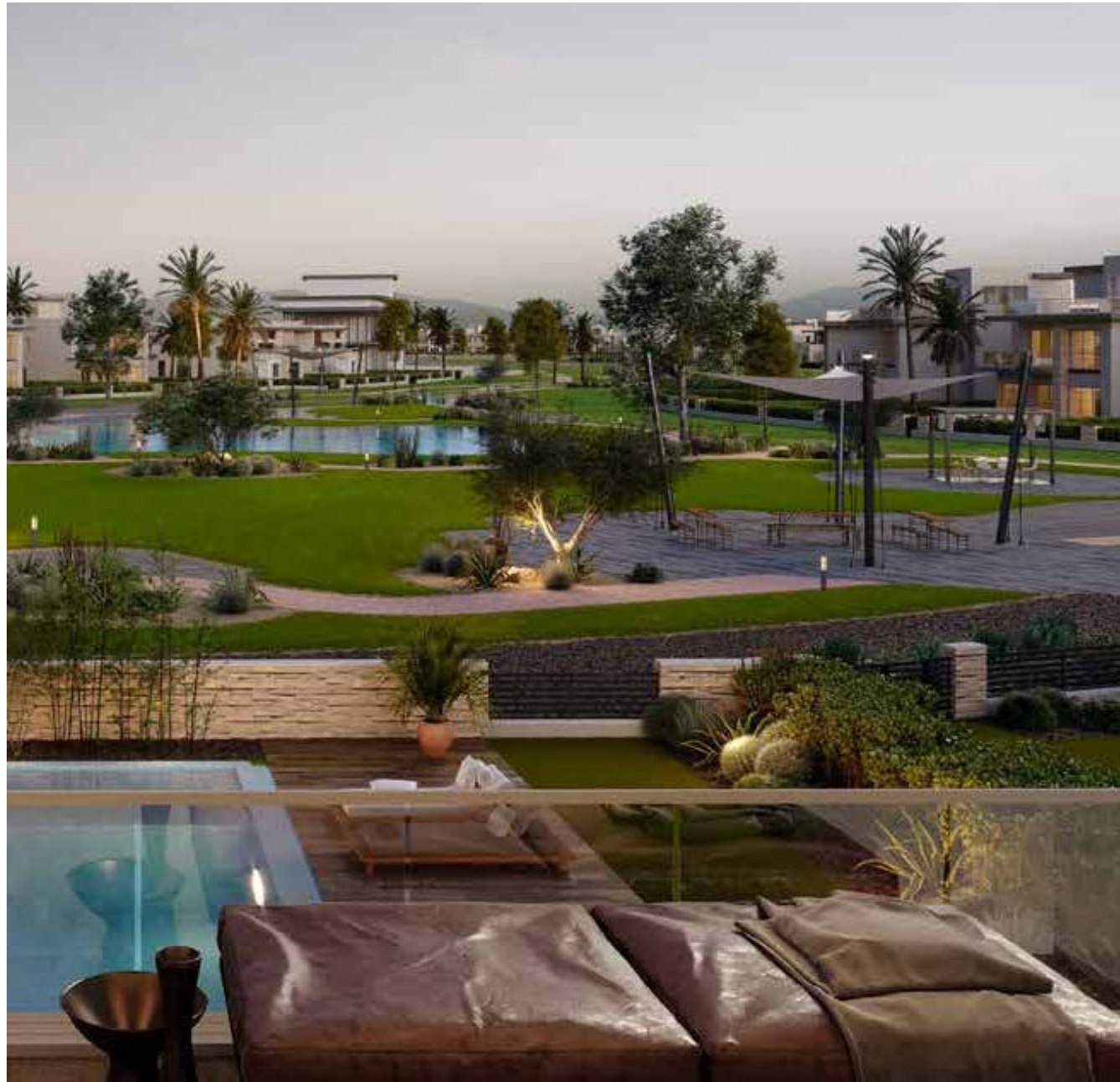


SODIC VILLETTE



SODIC THE ESTATES - OCTOBER CITY

Location	6th of October City
Client	SODIC
Consultant	ECG
General Contractor	CURVE
Duration	2023 - 2024
Project Value	107 Million EGP
Scope	Softscape – Hardscape – Irrigation Networks – Outdoor Furniture – Signage – Lighting Networks – Water Features – Swimming Pools – Road Paving



SODIC THE ESTATES - OCTOBER CITY



SODIC EDNC PARK

Location 6th of October City
Client SODIC
Consultant SODIC Design & Engineering
General Contractor CURVE
Duration 2023 - 2024
Project Value 69 Million EGP
Scope Softscape - Hardscape - Irrigation Networks - Outdoor Furniture - Signage - Lighting Networks - Water Features - Swimming Pools - Road Paving

SODIC EDNC PARK

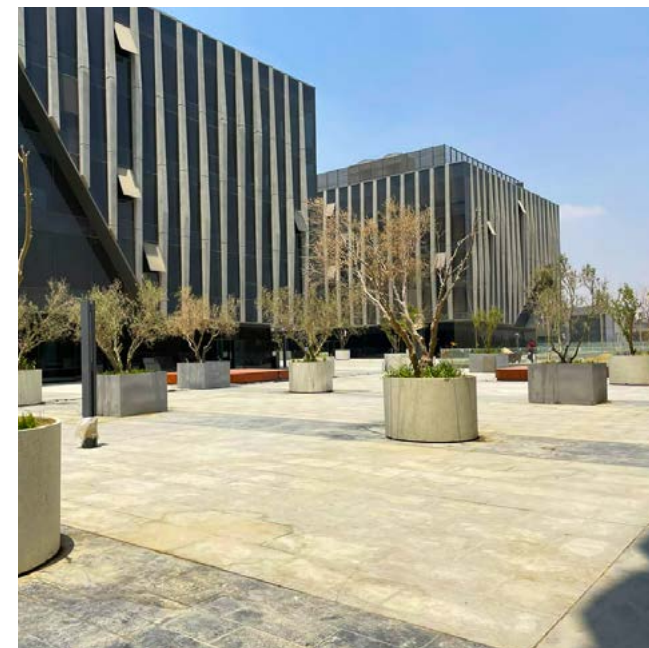


SODIC EAST TOWN

Location 5th Settlement, New Cairo – Egypt
Client SODIC
Consultant SLA
Duration 2021-2022
Project Value 50 Million EGP
Area of Work 65,000 Meter Square
Scope Softscape – Hardscape – Irrigation Networks – Outdoor Furniture – Signage – Lighting Networks – Road Paving – Agricultural Sub-Surface Drainage System



SODIC EAST TOWN

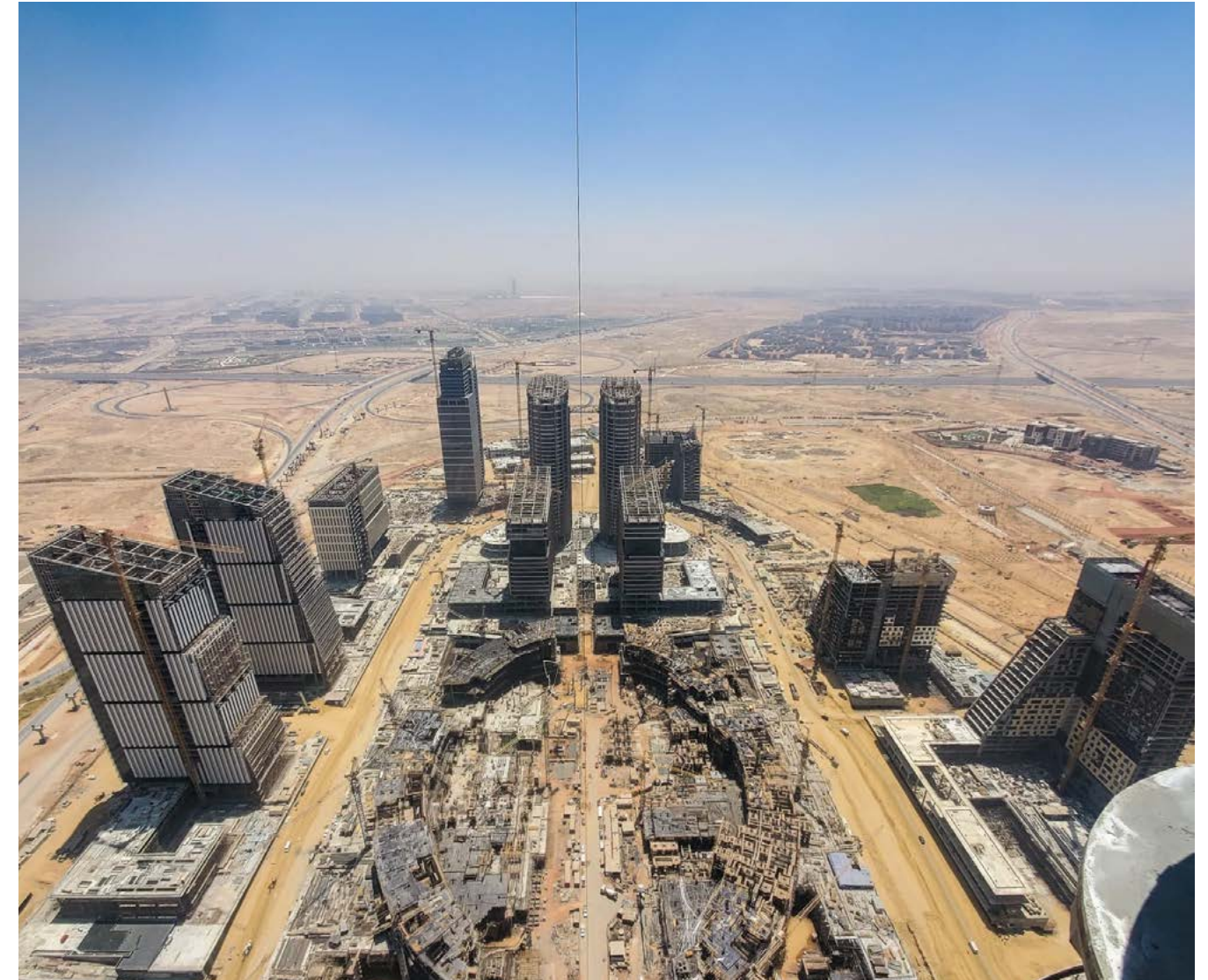


CBD CRESCENT TOWERS

Location Egypt's New Administrative Capital – Egypt
Client China State | CSCEC
Consultant Dar el Handasah
Duration 2023 - 2024
Project Value 3.5 Million USD
Area of Work 13,098 Meter Square
Scope Softscape – Hardscape – Irrigation Networks – Outdoor Furniture – Signage – Lighting Networks – Road Paving – Agricultural Sub-Surface Drainage System



CBD CRESCENT TOWERS





HASSAN ALLAM PROPERTIES SWAN LAKE RESIDENCE

Location 5th Settlement, New Cairo – Egypt
Client Hassan Allam Properties
Consultant Sites International
Duration 2023 - 2024
Project Value v35 Million EGP
Area of Work 34,079 Meter Square
Scope **Sports Club:** Softscape – Hardscape – Irrigation Networks – Outdoor Furniture – Signage – Lighting Networks – Road Paving – Agricultural Sub-Surface Drainage System



HASSAN ALLAM PROPERTIES SWAN LAKE RESIDENCE





HELIOPOLIS CO. FOR HOUSING & DEVELOPMENT NEW HELIOPOLIS CITY

Location The satellite city of Shorouk
Client Heliopolis Co. for Housing & Development
Consultant CPM Consultancy
Duration 2022 - 2023
Project Value 107 Million EGP
Area of Work 5500 Acres
Scope Infrastructure Works - Softscape - Hardscape - Irrigation Networks - Outdoor Furniture - Signage - Lighting Networks - Road Paving - Agricultural Sub-Surface Drainage System



HELIOPOLIS CO. FOR HOUSING & DEVELOPMENT NEW HELIOPOLIS CITY

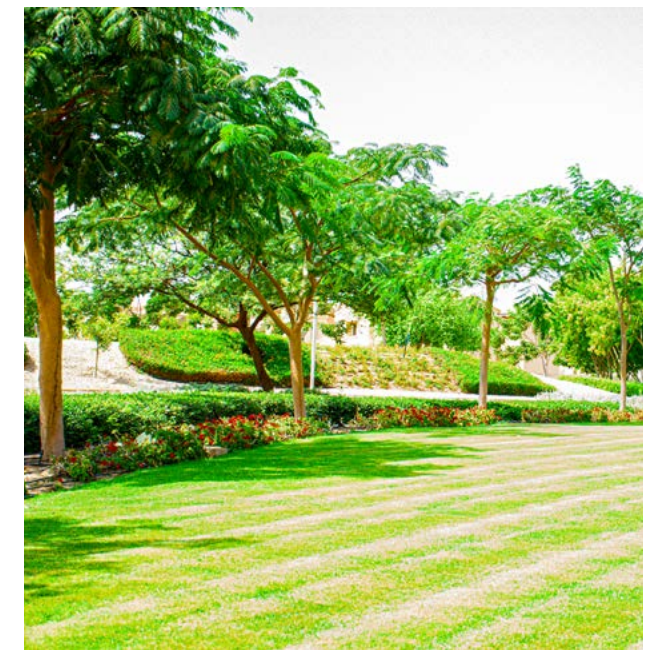


MIVIDA CENTRAL PARK

Location 5th Settlement, New Cairo – Egypt
Client EMAAR
Consultant Sites International
Duration 2013 – 2016
Project Value 19 Million EGP
Area of Work 160,000 Meter Square
Scope Softscape – Hardscape – Irrigation Networks – Lighting Networks



MIVIDA CENTRAL PARK

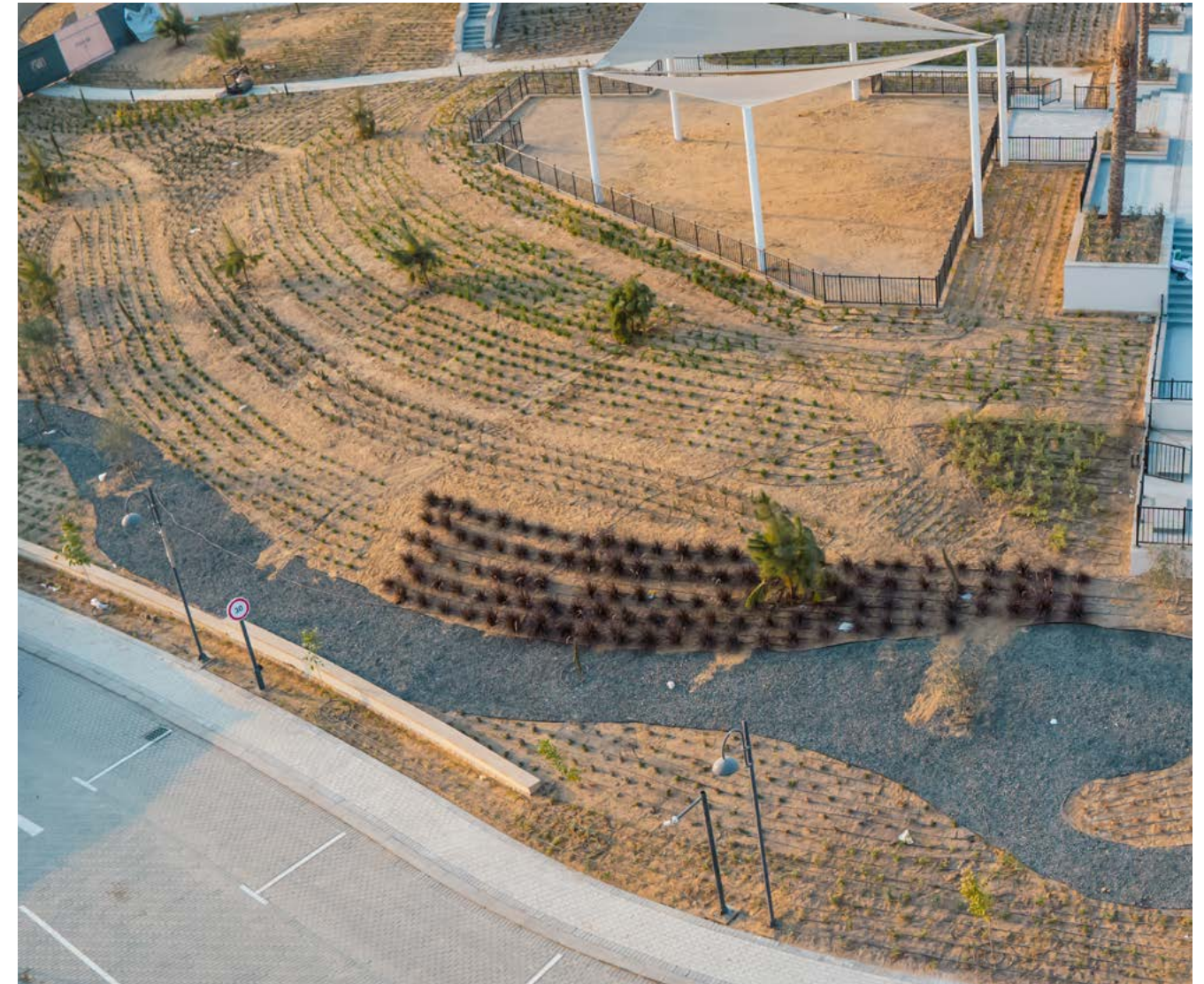


Uptown Cairo - Z3

Location Mokatam – Egypt
Client EMAAR
Consultant Sites International
Duration 2021 – 2022
Project Value 81 Million EGP
Area of Work 100,000 Meter Square
Scope Softscape – Hardscape – Irrigation Networks – Outdoor Furniture – Signage – Lighting Networks – Water Features – Road Paving – Agricultural Sub-Surface Drainage System



Uptown Cairo - Z3

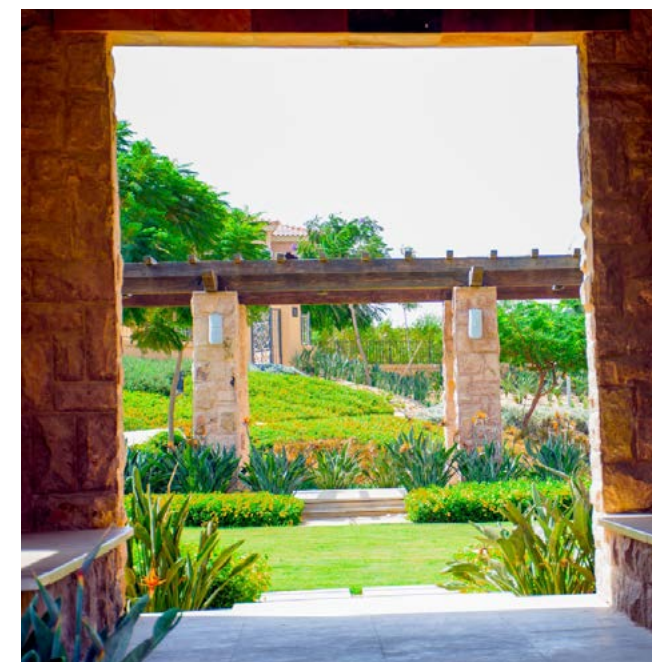




MIVIDA WADI 2

Location 5th Settlement, New Cairo – Egypt
Client EMAAR
Consultant Ehaf
Duration 2019 – 2020
Project Value 86 Million EGP
Area of Work 60,000 Meter Square
Scope **Main Gate:** Softscape – Hardscape – Irrigation Networks – Outdoor Furniture – Signage – Lighting Networks

MIVIDA WADI 2



MIVIDA

MIVIDA

Location 5th Settlement, New Cairo – Egypt
Client EMAAR
Consultant Sites International
Duration 2013 – 2016
Project Value 24 Million EGP
Area of Work 160,000 Meter Square
Scope Softscape – Hardscape – Irrigation Networks – Lighting Networks



Mostakbal City

Location 5th Settlement, New Cairo – Egypt
Client Mostakbal City
Consultant Space
Duration 2021 – 2022
Project Value 75 Million EGP
Area of Work 90,000 Meter Square
Scope Softscape – Hardscape – Irrigation Networks – Outdoor Furniture – Signage – Lighting Networks – Water Features – Road Paving – Agricultural Sub-Surface Drainage System



Mostakbal City

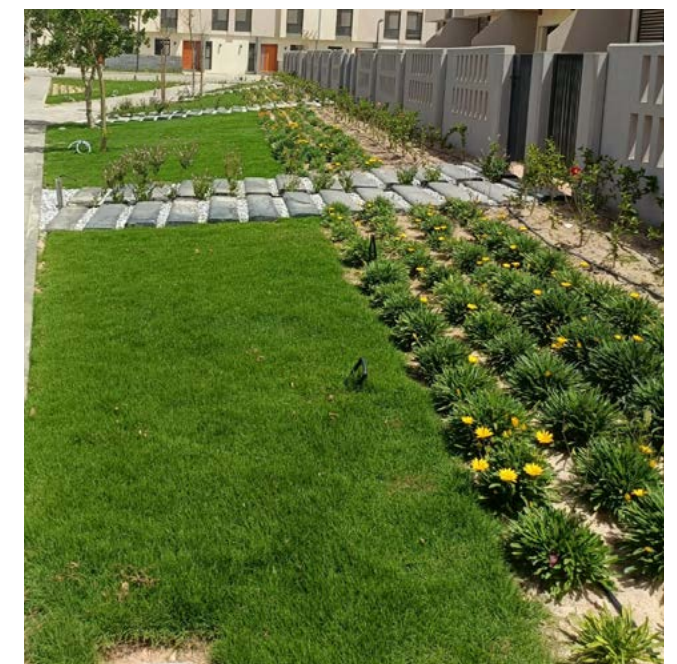


AL BOUROJ WESTERN ROAD

Location New Cairo – Egypt
Client CGP
Consultant KA Designs
Duration 2021 – 2022
Project Value 26 Million EGP
Area of Work 30,000 Meter Square
Scope Softscape – Hardscape – Irrigation Networks – Outdoor Furniture – Signage – Lighting Networks – Water Features – Road Paving – Agricultural Sub-Surface Drainage System



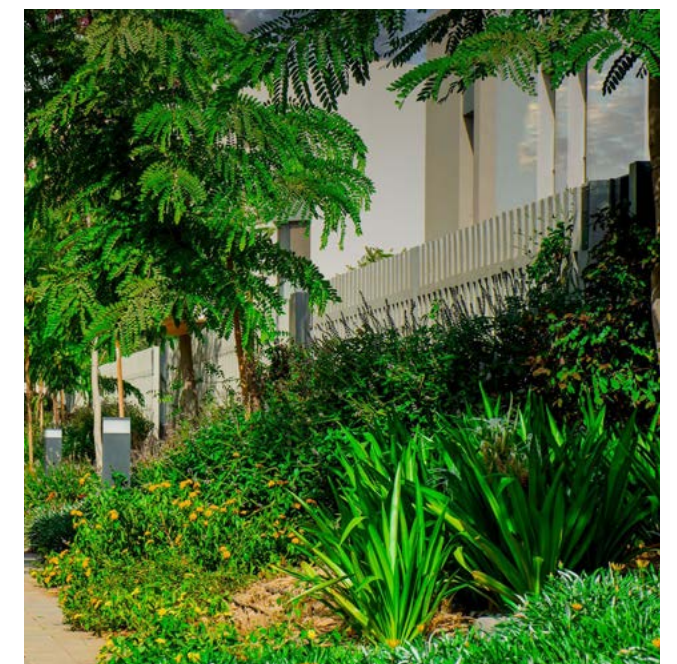
AL BOUROJ WESTERN ROAD



ALBUROUJ

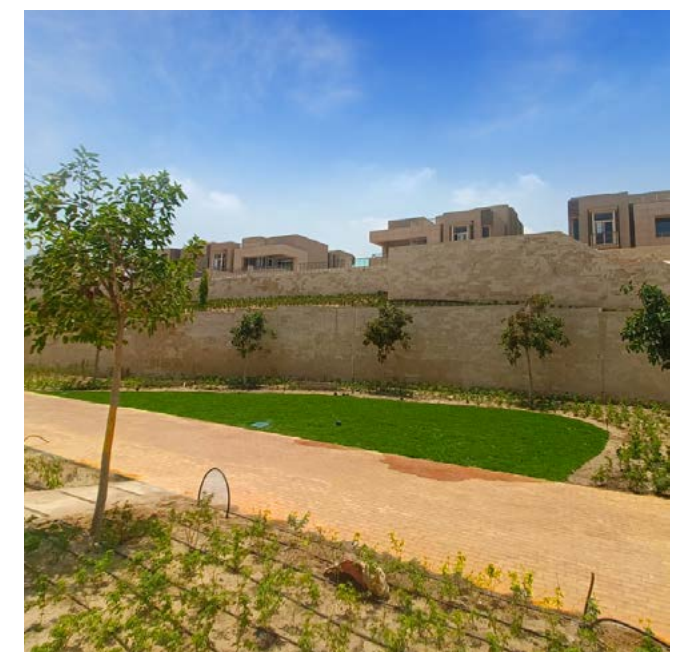
Location Ismalia Road – Egypt
Client IMKAN MISR – Capital Group Properties
Consultant Ehaf
General Contractor Hassan Allam
Duration 2019 – 2020
Project Value 40 Million EGP
Area of Work 36,000 Meter Square
Scope Softscape – Hardscape – Irrigation Networks – Outdoor Furniture – Signage – Lighting Networks – Construction Works

ALBUROUJ



CFC ORIANA VILLAS

Location 5th Settlement, New Cairo – Egypt
Client Al Futtaim
Consultant ECB
Duration 2021 – 2022
Project Value 30 Million EGP
Area of Work 40,000 Meter Square
Scope Softscape – Hardscape – Irrigation Networks – Outdoor Furniture – Signage – Lighting Networks – Water Features – Road Paving – Agricultural Sub-Surface Drainage System



CFC ORIANA VILLAS

MNHD SARAI

Location New Cairo – Egypt
Client MNHD
Consultant Sites International
Duration 2021 – 2022
Project Value 58 Million EGP
Area of Work 50,000 Meter Square
Scope Softscape – Hardscape – Irrigation Networks – Outdoor Furniture – Signage – Lighting Networks – Water Features – Road Paving – Agricultural Sub-Surface Drainage System



MNHD SARAI



DAMAC HYDE PARK

Location 5th Settlement, New Cairo – Egypt
Client DAMAC
Consultant Sites International
Duration 2012 – 2014
Project Value 11 Million EGP
Area of Work 90,000 Meter Square
Scope Softscape – Hardscape – Irrigation Networks – Outdoor Furniture – Signage – Lighting Networks – Water Features

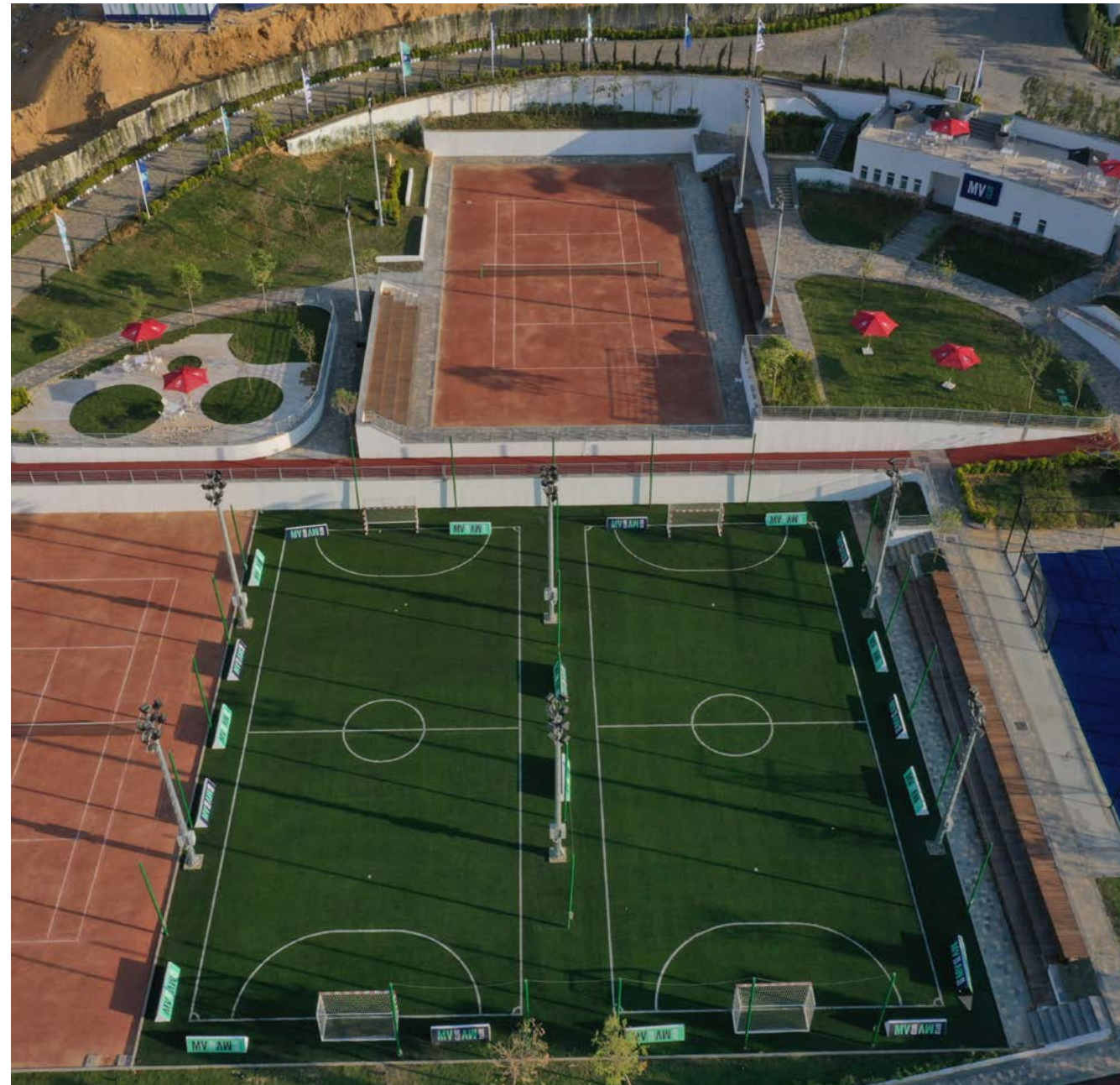


DAMAC HYDE PARK

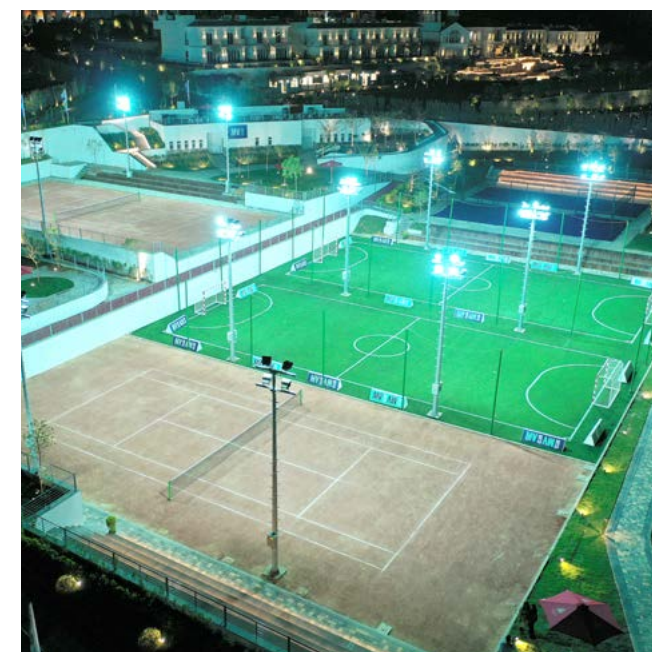


MOUNTAIN VIEW ICITY NEW CAIRO

Location New Cairo – Egypt
Client MOUNTAIN VIEW
Consultant DMA (Dar El Mimar Architects)
General Contractor DMC (Dar El Mimar Constructions)
Duration 2020-2021
Project Value 80 Million EGP
Area of Work 30,000 Meter Square
Scope Softscape – Hardscape – Irrigation Networks – Outdoor Furniture - Signage – Lighting Networks - Sports Courts - Playgrounds



MOUNTAIN VIEW ICITY NEW CAIRO

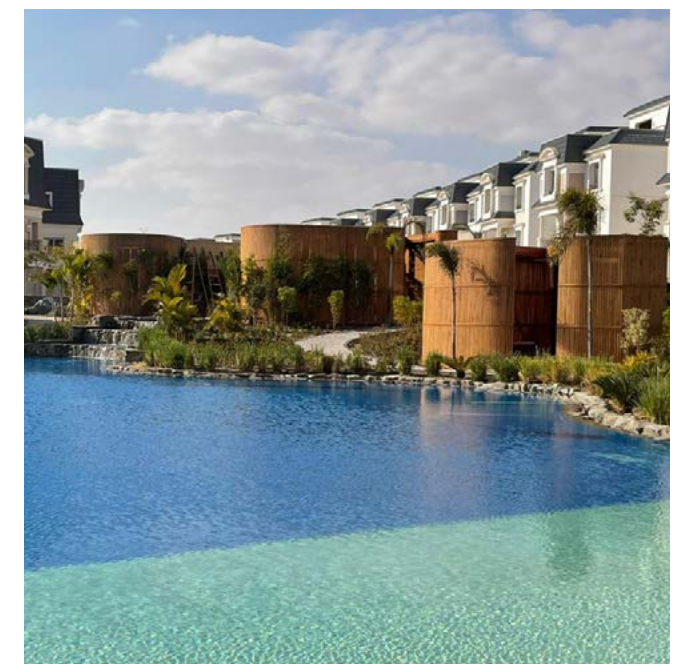
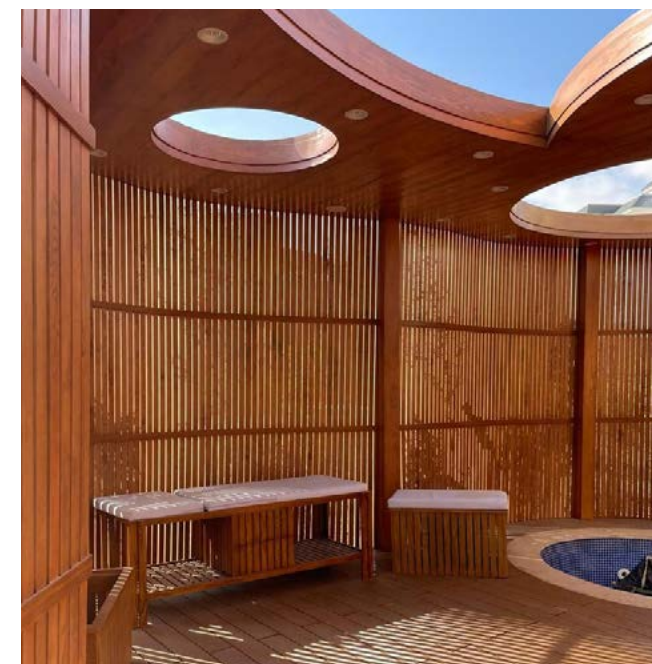


MOUNTAIN VIEW CHILLOUT PARK

Location 6th of October City
Client MOUNTAIN VIEW
Consultant DMA (Dar El Mimar Architects)
General Contractor DMC (Dar El Mimar Constructions)
Duration 2020 - 2021
Project Value 546 Million EGP
Area of Work 505,000 Meter Square
Scope Softscape – Hardscape – Irrigation Networks – Outdoor Furniture – Signage – Lighting Networks – Water Features – Swimming Pools – Road Paving



MOUNTAIN VIEW CHILLOUT PARK

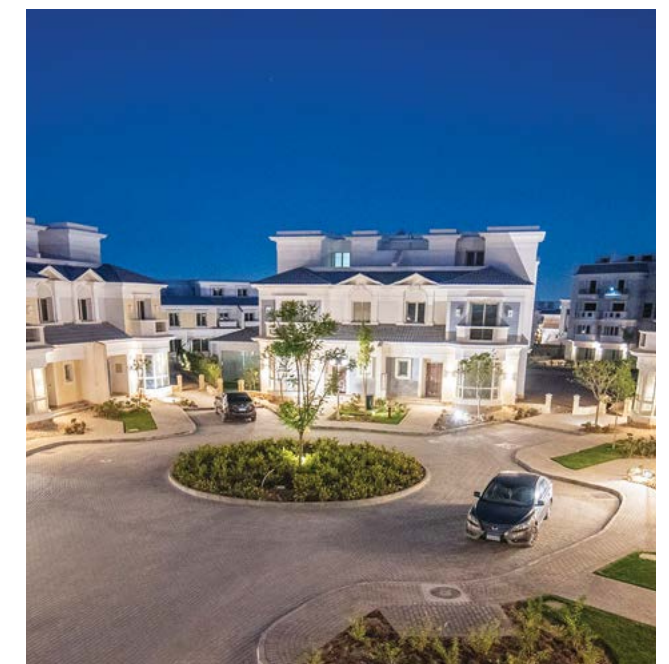


MOUNTAIN VIEW OCTOBER PARK (Rayous)

Location	6th of October City
Client	MOUNTAIN VIEW
Consultant	DMA (Dar El Mimar Architects)
General Contractor	DMC (Dar El Mimar Constructions)
Duration	2017 – 2019
Project Value	150 Million EGP
Area of Work	115,000 Meter Square
Scope	Softscape – Hardscape – Irrigation Networks – Outdoor Furniture – Signage – Lighting Networks – Water Features – Swimming Pools – Road Paving



MOUNTAIN VIEW OCTOBER PARK (Rayous)

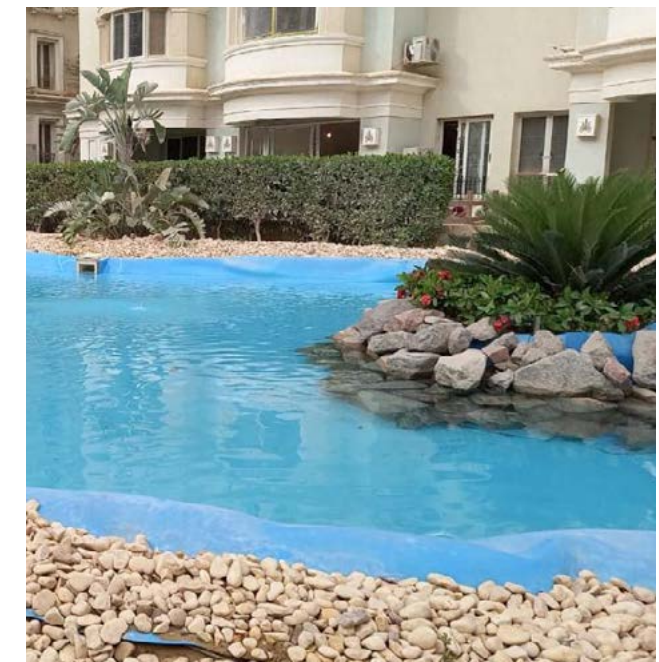


MOUNTAIN VIEW OCTOBER PARK (Rayous Extention)

Location	6th of October City
Client	MOUNTAIN VIEW
Consultant	DMA (Dar El Mimar Architects)
General Contractor	DMC (Dar El Mimar Constructions)
Duration	2017 – 2019
Project Value	150 Million EGP
Area of Work	115,000 Meter Square
Scope	Softscape – Hardscape – Irrigation Networks – Outdoor Furniture – Signage – Lighting Networks – Water Features – Swimming Pools – Road Paving



MOUNTAIN VIEW OCTOBER PARK (Rayous Extention)

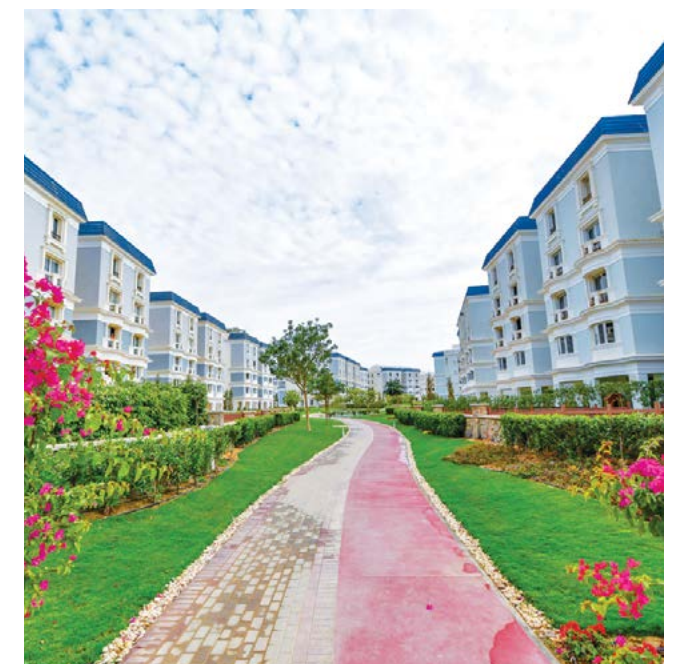


MOUNTAIN VIEW HYDE PARK

Location 5th Settlement, New Cairo – Egypt
Client MOUNTAIN VIEW
Consultant DMA (Dar El Mimar Architects)/ ACE
General Contractor DMC (Dar El Mimar Constructions)
Duration 2015 – 2020
Project Value 412 Million EGP
Area of Work 420,000 Meter Square
Scope Softscape – Hardscape – Irrigation Networks – Outdoor Furniture – Signage – Lighting Networks – Water Features – Swimming Pools – Road Paving



MOUNTAIN VIEW HYDE PARK





MOUNTAIN VIEW EXECUTIVE RESIDENCE GIZA PLATEAU

Location	Giza Governorate – Egypt
Client	MOUNTAIN VIEW
Consultant	DMA (Dar El Mimar Architects)
General Contractor	DMC (Dar El Mimar Constructions)
Duration	2015 – 2016
Project Value	21 Million EGP
Area of Work	43,000 Meter Square
Scope	Softscape – Hardscape – Irrigation Networks – Outdoor Furniture – Signage – Lighting Networks – Water Features – Swimming Pools – Road Paving – Agricultural Sub-Surface Drainage System



MOUNTAIN VIEW EXECUTIVE RESIDENCE GIZA PLATEAU



MOUNTAIN VIEW EXECUTIVE RESIDENCE KATAMEYA

Location 5th Settlement, New Cairo – Egypt
Client MOUNTAIN VIEW
Consultant DMA (Dar El Mimar Architects)
General Contractor DMC (Dar El Mimar Constructions)
Duration 2013 – 2015
Project Value 14 Million EGP
Area of Work 38,000 Meter Square
Scope Softscape – Hardscape – Irrigation Networks – Outdoor Furniture – Signage – Lighting Networks – Water Features – Swimming Pools



MOUNTAIN VIEW EXECUTIVE RESIDENCE KATAMEYA



MOUNTAIN VIEW MV1

Location 5th Settlement, New Cairo – Egypt
Client MOUNTAIN VIEW
Consultant DMA (Dar El Mimar Architects)
General Contractor DMC (Dar El Mimar Constructions)
Duration 2008 – 2012
Project Value 21 Million EGP
Area of Work 69,000 Meter Square
Scope Softscape – Hardscape – Irrigation Networks – Outdoor Furniture – Signage – Lighting Networks – Water Features – Swimming Pools



MOUNTAIN VIEW MV1



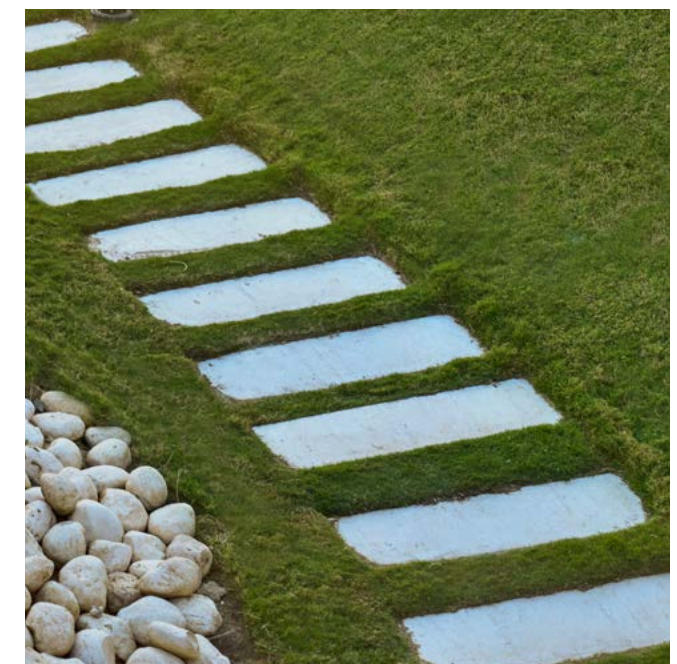
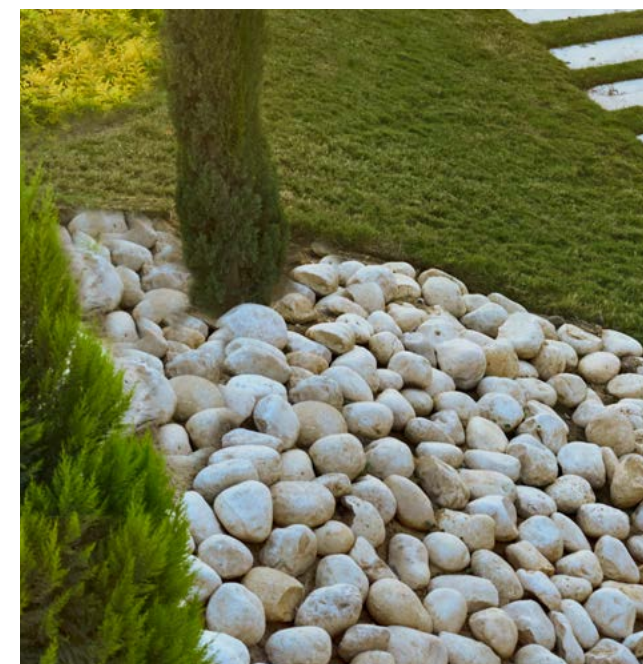


MOUNTAIN VIEW MV 2

Location 5th Settlement, New Cairo – Egypt
Client MOUNTAIN VIEW
Consultant DMA (Dar El Mimar Architects)
General Contractor DMC (Dar El Mimar Constructions)
Duration 2010 – 2015
Project Value 35 Million EGP
Area of Work 105,000 Meter Square
Scope Softscape – Hardscape – Irrigation Networks – Outdoor Furniture – Signage – Lighting Networks – Water Features – Swimming Pools



MOUNTAIN VIEW MV 2





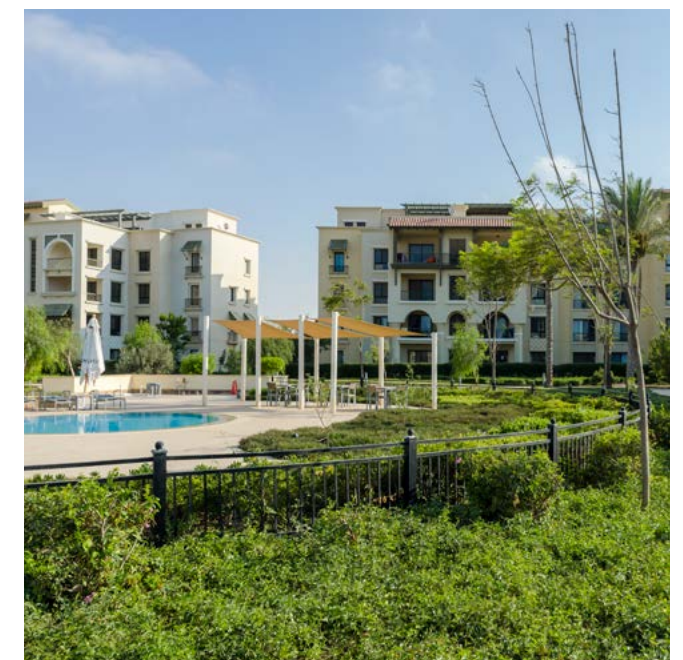
Landscape Contracting (Coastal Projects)

MARASSI KATANYA

Location North Coast
Client EMAAR
Consultant ECG
Duration 2012 – 2016
Project Value 34 Million EGP
Area of Work 113,000 Meter Square
Scope Softscape – Hardscape – Irrigation Networks – Outdoor Furniture – Signage – Lighting Networks



MARASSI KATANYA



MARASSI BLANCA

Location North Coast
Client EMAAR
Consultant ECG
Duration 2017 – 2019
Project Value 25 Million EGP
Area of Work 200,000 Meter Square
Scope Softscape – Hardscape – Irrigation Networks – Outdoor Furniture – Signage – Lighting Networks



MARASSI BLANCA

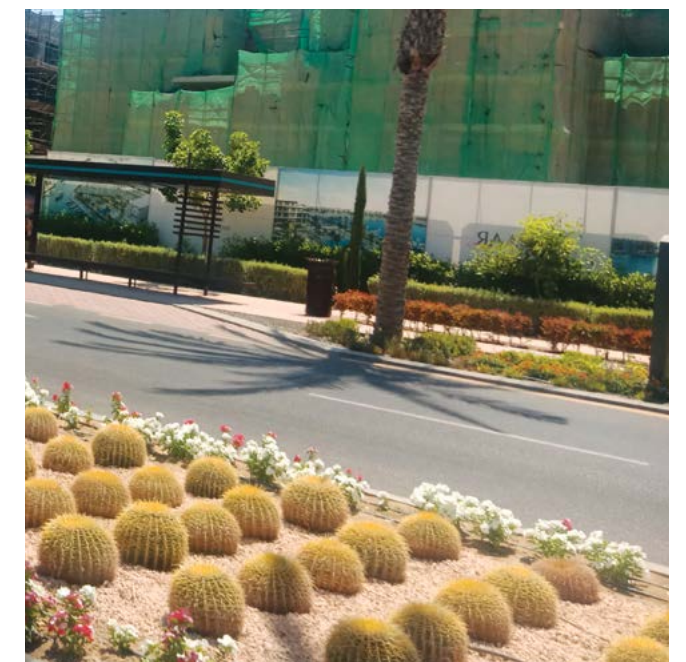


MARASSI RING ROAD

Location	North Coast
Client	EMAAR
Consultant	ECG
Duration	2017 - 2019
Project Value	23 Million EGP
Area of Work	3.5 KG- Meter Square
Scope	Softscape - Hardscape - Irrigation Networks - Outdoor Furniture - Signage - Lighting Networks



MARASSI RING ROAD

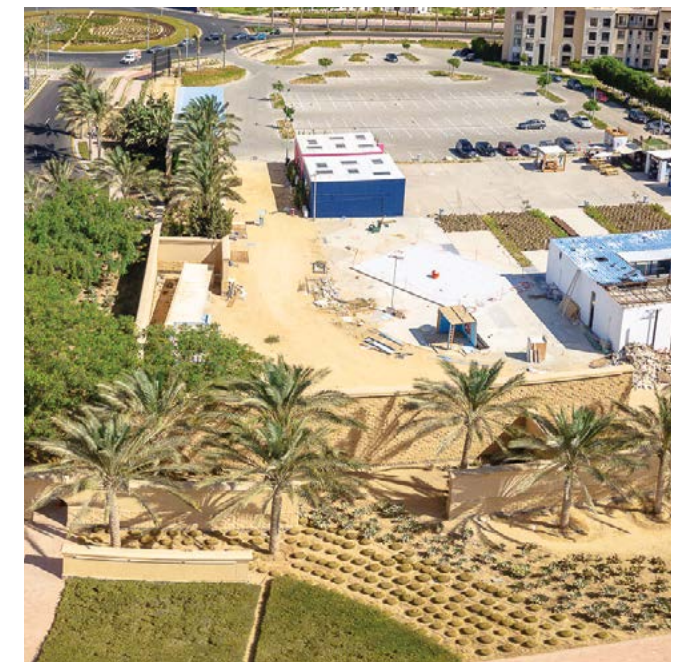
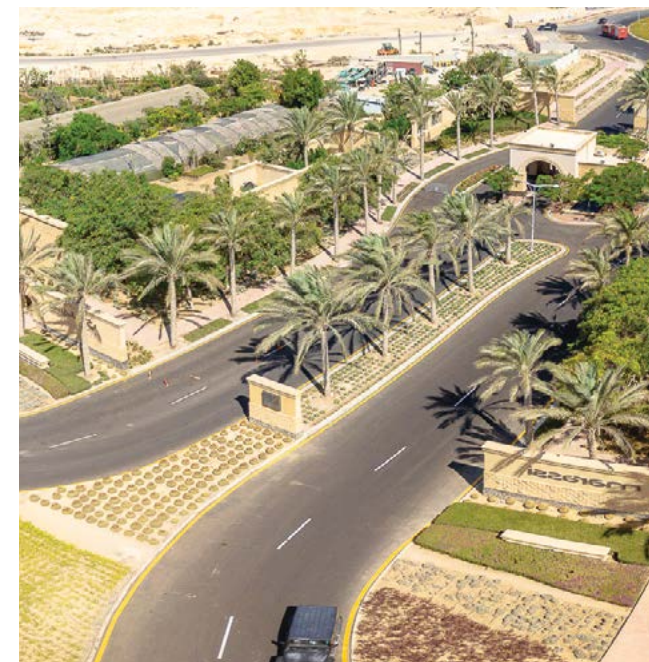


MARASSI BEACH PROMENADE

Location North Coast
Client EMAAR
Consultant ECG
Duration 2017 – 2019
Project Value 22 Million EGP
Area of Work 9,000 Meter Square
Scope Softscape – Hardscape – Irrigation Networks – Outdoor Furniture – Signage – Lighting Networks



MARASSI BEACH PROMENADE

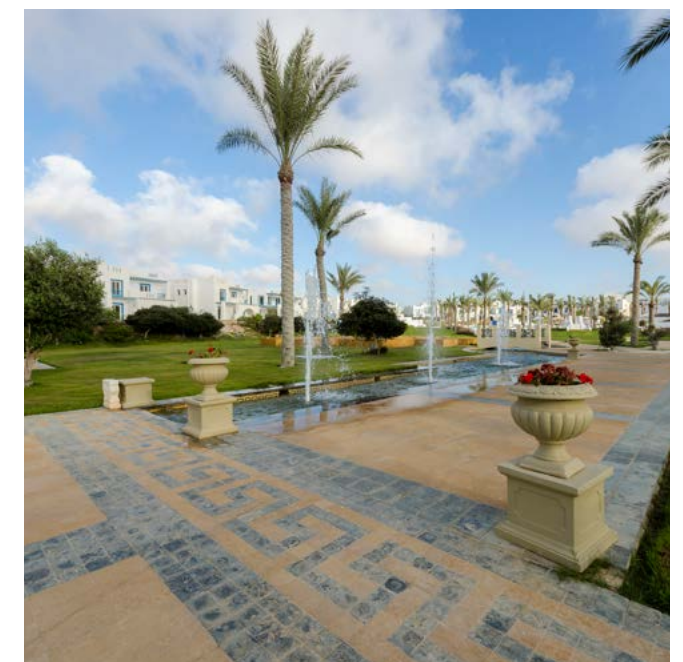


MOUNTAIN VIEW NORTH COAST

Location	North Coast
Client	MOUNTAIN VIEW
Consultant	ACE (Moharam Bakhom)
General Contractor	DMC
Duration	2010 – 2015
Project Value	83 Million EGP
Area of Work	180,000 Meter Square
Scope	Softscape – Hardscape – Irrigation Networks – Outdoor Furniture – Signage – Lighting Networks – Water Features – Swimming Pools



MOUNTAIN VIEW NORTH COAST



DIPLOMATS

Location North Coast
Client MOUNTAIN VIEW
Consultant DMA
General Contractor DMC
Duration 2013 – 2015
Project Value 31 Million EGP
Area of Work 60,000 Meter Square
Scope Softscape – Hardscape – Irrigation Networks – Outdoor Furniture – Signage – Lighting Networks – Water Features – Swimming Pools



DIPLOMATS

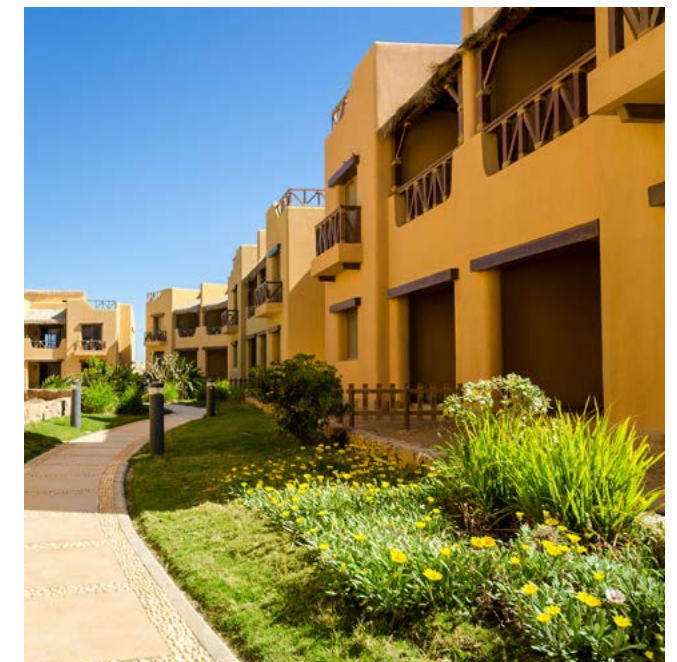


MOUNTAIN VIEW SOKHNA I

Location AL Ain Al Sokhna
Client MOUNTAIN VIEW
Consultant ACE (Moharam Bakhom)
General Contractor DMC
Duration 2009 – 2014
Project Value 40 Million EGP
Area of Work 122,000 Meter Square
Scope Softscape – Hardscape – Irrigation Networks – Outdoor Furniture – Signage – Lighting Networks – Water Features – Swimming Pools – Agricultural Sub-Surface Drainage System



MOUNTAIN VIEW SOKHNA I



MOUNTAIN VIEW SOKHNA II

Location AL Ain Al Sokhna
Client MOUNTAIN VIEW
Consultant ACE (Moharam Bakhom)
General Contractor DMC
Duration 2009 – 2014
Project Value 19 Million EGP
Area of Work 47,000 Meter Square
Scope Softscape – Hardscape – Irrigation Networks – Outdoor Furniture - Signage – Lighting Networks – Water Features – Swimming Pools



MOUNTAIN VIEW SOKHNA II





Ashgar Nursery

Ashgar Nursery

CURVE has own nursery to produce and supply every needed plant that caters to every project's needs and requirements, ensuring most of our softscape supplies are produced internally with the most advanced techniques in planting using green houses and a sophisticated system for quality control and unification of specifications.

Various plants are propagated - whether bought as seeds, seedlings, green or wood cuttings and plantlets - depending on every specific plant, planting techniques vary from in-greenhouse planting to open air planting to meet commercially convenient growth.



Ashgar in Brief

Ashgar is counted with a total area of **75** acres exclusively dedicated to the softscape components of a garden. We are the top-quality provider of a large selection of plants and planting services for diverse residential and commercial projects. Located on Ismailia Desert Road,

All serious businesses understand the importance of supporters, therefore we strive for excellence by building long-lasting relationships with our partners. We aim to create a business environment in which **Ashgar Nursery** can grow even more in innovation, efficiency, and their markets.

Ashgar is constantly looking for bringing the very best in the horticultural field. We are committed to adding value to our products while efficiently managing the lifecycle of our plants by using the right technology and knowledge. Alongside such achievements, we work on keeping our legacy as a market leader in Egypt and in the regional market.

Locations

Wadi El Molak, Ismailia Desert Road.







Services

Agriculture / Design

- All the required agricultural processing & implementation according to the approved design & time schedule.
- The design & implementation of nurseries.

Ornamental Plants

- Trees
- Shrubs
- Hemerocallis
- Ground Covers
- Ornamental Grass
- Climbers
- Cactus

Maintenance

Design & implementation of regular maintenance programs for gardens.

Technical Support Services

Providing technical & consulting support to the planting work during the design process.

Various plants are propagated - whether bought as seeds, seedlings, green or wood cuttings & plantlets - depending on every specific plant, planting techniques vary from in-greenhouse planting to open air planting to meet commercially convenient growth.

Products

Trees

Evergreen
(Flowering - Non-flowering)
Deciduous
(Flowering - Non-flowering)

Shrubs

Evergreen
(Flowering - Non-flowering)

Ornamental Grass

Evergreen
(Flowering - Non-annual)

Climbers

Evergreen
(Flowering - Non-flowering)
Deciduous
(Flowering - Non-flowering)

Hemerocallis

Flowering

Cactus



TREES

TREES

EVERGREEN TREES | NON-FLOWERING

DECIDUOUS TREES | NON-FLOWERING



Ficus benjamina

Melia azedarach

Populus alba

Swietenia mahogany

EVERGREEN TREES | FLOWERING

DECIDUOUS TREES | FLOWERING



Callistemon viminalis

Cassia glauca

Lagerstroemia indica

Jacaranda ovalifolia



Shrubs

Climbers

SHRUBS | NON-FLOWERING



Pittosporum tobira



Acalypha wilkesiana

CLIMBERS | NON-FLOWERING



Hedera helix



Epipremnum aureum

SHRUBS | FLOWERING



Tecomaria capensis



Raphiolepis indica

CLIMBERS | FLOWERING



Quisqualis indica



Clerodendrum splendens



Ground Covers

Cactus & Ornamental Grass

GROUND COVERS | NON-FLOWERING



Alternanthera dentata



Duranta gold

CACTUS



Agave parryi



Agave lopantha

GROUND COVERS | FLOWERING



Pelargonium zonale



Salvia farinacea

ORNAMENTAL GRASS



Pennisetum setaceum



Cymbopogon citratus



Partners of Success

CLIENTS

STRATEGIC PARTNERS

<p>Sports Facilities Leading Firm</p>	<p>Aluminium Manufacturing Solutions</p>	<p>MEP Specialised Contractor</p>	<p>Water Features & Lagoon</p>
-------------------------------------------	----------------------------------------------	---------------------------------------	----------------------------------------

CONSULTANTS



8 El Fateh St., From Al Hegaz St.,
Heliopolis, Cairo, Egypt.

(+202) 2638 3606
(+202) 2638 3607

curveinfo@dmc-curve.com
www.curvelandscape.com



PROFILE

— 2023 —